

PARQUET magazine

INSPIRATION, IDEAS AND A GUIDE TO TARKETT'S RANGE

WOOD FLOORS
– TIMELESS
AND ULTRAMODERN

CLASSIC OAK
IN TIMELESS
DESIGN

page 2

DARKLY
EXOTIC AND
EXCITING

page 19

CHILD'S PLAY
TO INSTALL
YOURSELF

page 34

Tarkett is one of the world's leading flooring manufacturers. Backed by more than 110 years of experience, we've built up unrivalled expertise in most types of flooring materials. This experience puts us in the perfect position to offer you floors in a wide range of materials and variations.

Tarkett manufactures flooring for every need and taste: wood floors, vinyl floors, linoleum floors and textile floors, as well as floor and wall coverings for wet rooms. Choose a floor from Tarkett and you're guaranteed the best quality. Our clear and comprehensive environmental policy

also ensures that we take the greatest possible care of the environment. Phone our customer services on +46 (0)20 63 00 76 or visit our website at www.tarkett-floors.com to find out more about our flooring or locate your nearest stocklist.

Epoque Maple plank

Tarkett Sales Companies

Australia, Castle Hill, N.S.W.
Tel: +61-2 98 99 32 55, Fax: +61-2 96 34 10 29

Austria, Vienna
Tel: +43-1 478 80 62, Fax: +43-1 478 80 61

Belgium, Brussels
Tel: +32-2 520 04 67, Fax: +32-2 520 05 88

Canada, Calgary
Tel: 403 699 7700, Fax: 403 699 7701

Denmark, Greve
Tel: +45-43 90 60 11, Fax: +45-43 90 37 00

Finland, Espoo
Lars Sonckin kaari 16, 02600 Espoo
Tel: +358 (0)9 5406 5870,
Fax: +358 (0)9 5406 5871

France, Baisieux
Tel: +33-320 64 46 46, Fax: +33-320 64 46 58

Germany, Frankenthal
Tel: +49-6233-81 0, Fax: +49-6233-81 10 10

Great Britain, Worcester
Tel: +44-1 905 342 743, Fax: +44-1905 342 777

Hong Kong, Wanchai
Tel: +852 2511 8716, Fax: +852 2507 5517

International/Germany, Frankenthal
Tel: +49-6233 810, Fax: +49-6233 81 16 20

Italy, Milan
Tel: +39-02 319 211, Fax: +39-02 349 01 89

Norway, Drammen
Pb. 500 - Brakerøya, 3002, DRAMMEN
info.norway@tarkett.com
Tel: +47-32209200, Fax: +47-32209201

Poland, Warzaw
Tel: +48-22 598 08 80, Fax: +48-22 598 08 70

Portugal, Lisbon
Tel: +351 21 756 75 40, Fax: +351 21 756 75 41

Production Unit/Sweden, Hanaskog
Tel: +46 44 26 80 00, Fax: +46 44 638 90

Russia, Moscow
Fax: +7 095 795 33 90

Serbia and Montenegro, Backa Palanka
Tel: +381 (0) 21 7557 649, Fax: +381 (0) 21 7557 637

Singapore, Singapore
Tel: +65 6743 53 84, Fax: +65 628 49 336

Spain, Madrid
Tel: +34-91 358 00 35, Fax: +34-91 358 06 19

Sweden, Sollentuna
Tel: +46-8-625 19 00, Fax: +46-8-96 62 83

Switzerland, Handelszentrum Wallisellen
Hertistrasse 2, Eingang C, CH-8304 Wallisellen
Tel: +41 (0)44 878 10 80, Fax: +41 (0)44 878 10 81

The Netherlands, Breda
Tel: +76-5780760, Fax: +76-5780766

USA, Johnson City,
TN Tel: +1-423 928 31 22, Fax: +1-423 928 94 45

Ukraine, Kiev
Tel: + 380 (44) 490 27 14, + 380 (44) 490 27 15
Fax: + 380 (44) 496 03 80



Contents

Oak , the classic with many faces	2
A cherry floor stimulates all the senses	8
Light up the room with beech	9
Birch shines like no other	14
Shape your home with colour	16
Dark exoticism making inroads	19
Unique floor with Elegance	23
Maple – the tough blond	25
Lively ash makes a beautiful floor	28
Four collections on one page.....	30
Choosing the right thickness for your new floor	31
Protecting your new floor	32
Installation is quick, easy and glue-free	34
Dotting the i's	36
Caring for your wood floor	38
The quiet revolution	39
The environment likes Tarkett	40
Our forest friends	41
Wood floors in public spaces	42
Our complete range of wood floors	49



Page 2



Page 6



Page 20



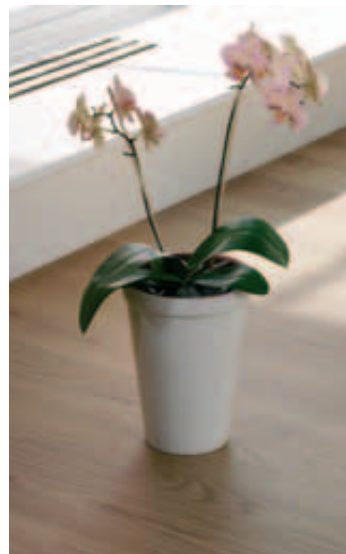
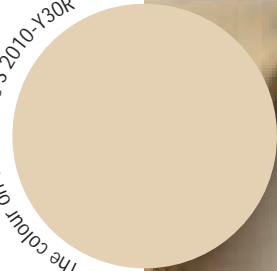
Page 27

Parquet Magazine no. 3 is published by Tarkett Hanaskog **Production:** Store Action Reklambyrå AB
Art Director: Jan Örnebjär **Writers:** Patrik Moks and Lasse Nordström **Interiors co-ordinator:** Eva
Riddarström **Cover photo:** Frog Studios **Photos** pages 1-39: Frog Studios and Rolf Lambreus
Translation: Magpie **Printing:** Kristianstad boktryckeri **Furniture and fittings:** Anagram, Studio B3,
Fogja, Designorget, Lustrum, Floss, NK Nordiska Hem, NK-Classic Home, Mio, Grafit, Clark's Case,
Ekerö Möbler, Room, Offect, Ikea, Åhléns, Asplund and Newport.

WALKING THE plank in style

No floor can offer such an exciting and clear paradox as oak. Classically timeless and ultra-modern at the same time. **Epoque Oak Maxi plank** also gives a room a clear but discreet sense of class. The 16 cm wide planks make the floor look unusually expensive. And of course the planks are treated with **Protecto Natura**, which gives a matt finish like an oiled floor, but with the advantages of a lacquer. A floor made to walk on, with both class and style.

The colour on the wall is S 2010-Y30R



Epoque Oak Maxi plank Protecto Natura



BRUSHED OAK for a sweeping impression

Epoque Oak Brushed Plank

Modern interiors are often minimal and elegant with stylish designs. Rooms are decorated sparsely and with finesse. In this context, brushed oak can bring an aura of naturalness and warmth with its strong wooden identity. **Epoque Oak Brushed Plank**, with its bold grain, adds a more natural and robust element to the classic style of oak. And of course, the floor is just as wonderful to walk on as it is to look at.



Almost all good parties start and finish in the kitchen. It has become the natural place to socialise in so many contexts; dinners, parties, cocktails, etc. That's why it is extra important to lay the foundation for happiness and harmony at floor level. Correctly cared for, an oak floor in the kitchen is an asset to any home. Beautiful, easily maintained and wonderful to walk on. Maybe that's why guests never want to go home?



GOOD PARTIES start and finish in the kitchen



Viva Oak 2-strip

Simple and natural with **VIVA**

The slogan “The floor that practically installs itself” has made Tarkett **Viva** a top seller. Ultraloc is the name of the locking system introduced with the Viva floors (but which is now available on Tarkett’s regular Salsa and Rumba floors). The clever locking mechanism makes the floor extremely easy to in-

stall yourself without using adhesive. All you need is a hammer block and a few taps with a hammer to lock the boards horizontally with each other, without any gaps.

Although Viva is a relatively thin floor, it is a genuine wood floor with the feel that only mother nature her-

self can create. We offer a wide range of options in various woods, all of which are strong enough to take the hard knocks of everyday life. A good value alternative for those who want a genuine wood floor.

Viva Cherry 3-strip



RED is the colour of love

Superb, sensual or simply beautiful are suitable adjectives for the **Cherry 3-strip** floor which the Lundgren family laid in their house. It provides a silky feel and is a pleasure to the eye and to children’s bare feet.

“We wanted a living material, so a wood floor was the obvious choice,” explains Johan Lundgren. Cherry is living in other ways, too, as the red-brown tone darkens over time and becomes deeper and more intense year after year.



Epoque Beech Maxi plank



Dreaming of the beech beneath your feet

Padding around on a wonderful wood floor in the bedroom is a luxury you deserve. **Epoque Beech Maxi plank** creates a light and natural atmosphere – a dream to sleep in. The 16 cm wide planks give a warm and luxurious feeling – a worthwhile treat in a room where we spend a third of our lives. Give the bedroom a lift and yourself something to dream about, your very own beech.

Just IMAGINE!

It's easy to give a bedroom a lift. Just look down. Imagine a beautiful new wood floor under foot that is easy to clean and keep free from dust, giving a more airy feeling.

The old carpet has been replaced with **Salsa Beech Classic 3-strip**. It seems an obvious choice when you see how the rest of the room gets a sudden lift and stands out.



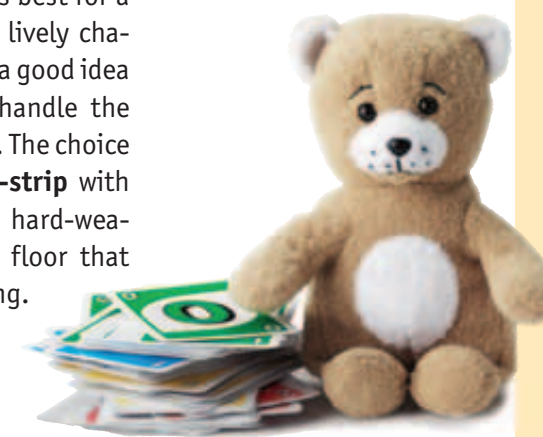
Salsa Beech Classic 3-strip



Bravo Beech 3-strip

ROOMS full of life

What kind of wood floor is best for a child's room? One with a lively character, of course. It's also a good idea to lay a floor that can handle the most boisterous of games. The choice here was **Bravo Beech 3-strip** with Proteco lacquer. A light, hard-wearing and beautiful wood floor that can handle almost anything. Year after year.



A NATURAL CHOICE

Wood has always been a natural choice for people selecting materials for the house and home. Today it's a more fashionable choice than ever and there's no sign of the trend changing. Investing in a wood floor is the modern thing to do.

A pleasurable experience for the eyes and for all the senses. The lovely warm feeling of a genuine wood floor under your feet. The beautiful look with the characteristic living grain which varies from wood to wood. Calm or lively. Feisty or harmonious.

Bright LUXURY

Installing a real plank floor of beech makes life a little brighter. And more luxurious. Beech gives a room a relaxed and refined feel, while also making the natural light brighter. It is particularly good in rooms where you

spend your daylight hours, e.g. the living room. Why not huddle up in your armchair with your favourite magazine for a few hours of peace and quiet?

Epoque Beech Maxi plank



Epoque Beech Plank

PEACE & harmony

There is something special about the beech tree. If you have ever been in a light, leafy beech wood, you know what we mean. It has a peace and harmony that other woods lack. Enter a room with a beech floor and you are likely to enjoy that same feeling. A comfortable and beautiful room

with its very own lustre. **Epoque Beech Plank** is ideal for bedrooms or other rooms where you want a slightly calmer mood. However, beech has another advantage – it is hard-wearing. The fact is that beech is as hard as oak, and is therefore also a great choice for the kids' room when the toy

fire engine rushes out on call or the tower of building blocks crashes to the ground.

Tarkett offers a wide range of beech floors. Everything from 3-strip to Epoque Maxi plank, as the picture shows.

BEAUTIFULLY gleaming

You've slept well and are completely relaxed. You get out of bed and put your feet down onto a lovely warm, gleaming wood floor. What better way to start the day than with the warm and pleasant touch of wood on your feet.

For the bedroom we have chosen **Salsa Birch 3-strip**, a distinguished floor with a superb lustre which gives the floor life and excitement. Being a softer wood, birch is ideal for the bedroom. The blond Nordic light comes free.

Salsa Birch 3-strip



Epoque Birch Maxi plank

Lina is tying her shoes in the glow of the **Epoque Birch Maxi plank** floor. Birch is well-known for its unique ability to lift and light up its surroundings. Birch is a romantic and slightly softer wood with purity and natural character from the word go. The wood has a gleaming lustre that few other floors can offer, harmonising with light interiors. Birch Plank also gives an impression of airiness.

A LIGHTER VIEW on life

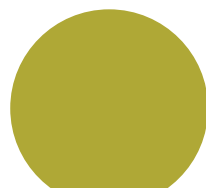
SHAPE your home with colour

Coming up with a colour scheme for your home is both fun and exciting. There are many ways to deceive the eye and change the character of a room. Light rooms give a sense of space while dark rooms feel smaller. Colours and shapes can be used to make a room feel wider or narrower. The possibilities are endless.

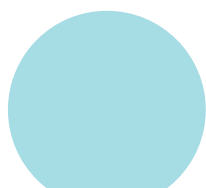
How a colour is perceived varies from person to person. However certain colours do have a general effect. Yellow has a stimulating effect and makes us active. Green is calming, with its obvious link to nature. Blue works well in most contexts with its cool and calming effect. Red is the colour of love and generates energy.

Describing a colour

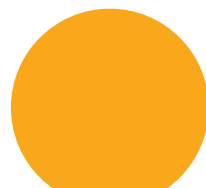
What does a midnight blue actually look like? Or sunny yellow? Various colour systems have been developed to make colour descriptions accurate and reliable. The most widely used international system is called NCS (Natural Colour system). There is a specific NCS number for every colour, along with its shades, complementary colours and tones. If you need help, ask at your local paint store. Here in this magazine, you will find NCS numbers next to several of the interior pictures. This way you can quickly and easily use the colours in your own interior designs.



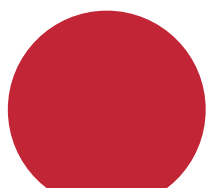
Colour code: S 3050-G70Y



Colour code: S 0530-B10G



Colour code: S 0580-Y30R



Colour code: S 1580-Y90R

MISSION Impossible



Salsa Oak 3-strip

The Redeken family in Amsterdam are proud of their new wood floor, **Salsa Oak 3-strip** with Proteco lacquer. Proudest is the father Ruud who, together with the girls Nicole and Anna, installed the floor in only two days.

“We chose to live in an apartment specifically to avoid the work involved in owning a house and garden. I’m not particularly good at DIY so my wife thought it would never work.”

Despite the fact that the floor measures over 40 m², the work went quickly and without any major hitches. The children thought it was fun and exciting to help out and the result was better than they had ever imagined.

“It’s a great floor to play on, and lovely in every way.” Another advantage the Redekens have found is that the floor is easy to clean.

But mother Kim’s opinion is clear. “Above all it’s incredibly beautiful. I’m still pleasantly surprised when I come out of the bedroom in the morning.”

So now Kim is threatening, with a laugh, to demand new floors in the bedrooms too.

TIMES CHANGE... but wood remains



Decorating trends come and go, materials develop, but wood floors are as popular today as they’ve ever been.

Flooring manufacturer Tarkett is one of the few remaining pioneers when it comes to producing wood floors. It all started over 110 years ago with the manufacture of oak parquet flooring, initially as a sideline to cartwheel production, in a small factory in southern Sweden. At that time the parquet floor consisted of strips

or planks of solid oak or pine. Today the design is rather different. Most of the world’s wood floors are produced to a 3-layer design – an innovation launched by Tarkett in the 1940s.

Wood is a living material which swells and shrinks as humidity levels change. The 3-layer design combats this. The direction of the fibres in the various layers of wood locks the wood’s natural movement and stabilises the floor.

Development continues, with new improvements made all the time. Today our wood floors are all pre-oiled or lacquered when they leave the factory. The new locking systems on our wood floors make them simpler to install as they do not require adhesive. Wood floors never go out of fashion, but their design is constantly being improved.

Dark exoticism

An exciting, exotic beauty spreads out in the lounge, carrying a scent from another world. The floor is Salsa Merbau 3-strip, which has an integral strength and warmth setting it apart from the everyday and allowing the senses to relax.

Merbau is a dark tropical wood which generally grows across South-East Asia. In old Siam, now Thailand, Merbau was said to combine strength, beauty and dignity. You can't help but agree when you see the floor in this apartment, where the dark red-brown colour contrasts beautifully with the white walls and the light from the large windows.

Merbau is also one of the hardest and most durable woods around. This ensures that knowledge of a decision well made and a good investment will grow in time.

Salsa Doussie Africana 3-strip



Salsa Doussie Africana 3-strip is a very popular wood in Southern Europe. The floor is extremely beautiful with its red tone and slight hint of pink. A somewhat more restrained wood from our dark collection.

Salsa Merbau 3-strip

A FLOOR full of life

With its lively grain, Ovengkol is an exciting member of the dark wood range, bringing large areas to life. In the picture, the **Salsa Ovengkol 3-**

strip creates an effective contrast with the light furniture. Ovengkol comes from Africa and can be best described as an exotic form of wal-

nut, with tinges of golden brown and hints of yellow.

Salsa Ovengkol 3-strip



Salsa Jarrah 3-strip

FROM A WORLD Down Under



Jarrah is harder than oak, with an attractive colour ranging from red-brown to dark brown. Originating in Australia, the wood has a beautiful grain and a comfortable feel. The perfect base for doing something exciting with your home. The dark lustre contrasts beautifully with light colours and

elegantly accentuates the shape of your furniture. Its hardness and durability make **Salsa Jarrah 3-strip** ideal for more heavily trafficked areas such as the hall or living room.

A SENSUAL step

The floor affects the perception of the whole room and is perhaps the most important part of the interior. The first step into a room becomes an immediate physical signal to all the body's senses. With **Epoque Iroko Plank** the experience is almost sensual. The generous planks with their narrow grain shift between golden brown and dark brown. Over time, the wood takes on an even more golden tone and creates a pleasant feeling of a room full of life, a treat for all the senses.

Epoque Iroko Plank

Viva Sapele 3-strip

AFRICAN beauty

Sapele is the name of a Nigerian port and fittingly the centre for the country's forestry industry. While we can't be sure that the town takes its name from the wood, it's an undeniable fact that Sapele is one of the finest African woods going. The deep and richly varied red-brown lustre gives a mahogany-like appearance, but Sapele is harder, denser and more stable.



Epoque Jatoba Maxi plank

A FLOOR WITH rhythm

Some floors encourage a sensual and passionate life – **Epoque Jatoba Maxi plank** more than most. With its origins in Brazil and extreme hardness, it gives you a sense of the samba rhythms. Jatoba has a close grain and the red-brown colour deepens over time. Take the leap, feel the beat and enjoy the sensation.



Elegance Cherry/Maple

IN A CLASS of its own

The floor is one of the room's largest design surfaces, with masses of space for your creativity to run wild. If you want to realise your ideas, **Elegance** is your answer. It is installed strip by strip and glued to the floor. Certainly more demanding work, but it rewards you with an utterly unique result – in

this case a stunning interplay of maple and cherry. If you like design, you should also take a closer look at cherry. The silky smooth floor has a wonderful red-brown tone that darkens over time and becomes deeper and more intense year after year.

Installing a beautiful new floor in record time was not the main aim when refurbishing this kitchen, but that's what happened.

The family had set aside the whole weekend for the project, but when they saw that the floor they liked came with Tarkett's new Ultraloc system the choice was easy, as was the work. There was no need for glue, as the boards are tapped together to lock with each other horizontally, without any gaps. It took a single afternoon to install the floor and have it ready to be shown to the first guests that evening (read more about Ultraloc on page 34). The floor that gave the kitchen such a boost was **Salsa Maple Natural 3-strip**. Maple is just as successful functionally as it is in terms of appearance. It is one of the hardest woods around and more hard-wearing than most. The combination of the discreet pale wood and the narrow, but still clearly defined, grain also makes maple an aesthetic feature in itself.

Remember to always use protective pads under tables and chairs.

Design and function
IN HARMONY



NATURAL feeling

Epoque Maple 2-strip, oiled

Maple is a useful wood, employed in the manufacture of furniture and musical instruments. It's also difficult to beat as a flooring. Sophie Riddarström's dining room gained a whole new lease of life with **Epoque**

Maple 2-strip. The floor is oiled to accentuate the maple's typical natural feeling and grain even more. "I wanted a floor that I know will stand the test of time and retain its quality." The maple is durable and

relatively resistant to wear, as well as being a timeless design. It will retain its style whatever the current trends in interior design.



Epoque European Maple Plank

The colour on the wall is S1020-B106

THE LIGHTER SIDE of life

If you want to capture the natural light in a room, maple is the perfect choice. The wonderful shade of yellow makes the sun a constant compa-

nion. **Epoque European Maple Plank**, with its 12 cm wide planks, gives a natural and exclusive impression and creates a fine environment

for your enjoyment. The narrow but clearly defined grain of the maple makes the floor a design feature in itself.