

Installation instructions
Floating installation
– 8.5, 11.5, 12 and 14 mm

CONDITIONS

Floating installation means that the wood floor is not attached (i.e. with nails or adhesive) to the subfloor. The subfloor must be level, sound, clean and dry and must meet the relevant standards applicable to the country in question.

The relative air humidity (RH) must lie between 30% and 60% and the temperature must be at least 18°C before, during and after installation. As moisture may appear from a new building, the room should be heated and aired for at least a month before installation, so that the right indoor climate is achieved.

Laminate flooring from Tarkett should be stored under the same climatic conditions as above and not directly on/against concrete. The packs must not be opened until immediately before installation.

TOOLS

In addition to traditional tools such as a hammer, handsaw, jigsaw or circular saw, rule, try square, pen, drill and chisel, we recommend using a Tarkett tapping block and our Tarktool. The tapping block protects the edges of the boards when tapping them together – never use a cut bit of board as a hammer block as this will chip the edges. The Tarktool makes it easier to get the last row of boards in place. When gluing, use Tarkett's adhesive for wood floors (refer to GLUING section for more details).

DAMP PROOF MEMBRANE

Always apply a damp proof membrane where moisture may rise from the subfloor and always when the subfloor is concrete on earth, a light concrete floor, floors over damp and warm rooms (laundry room, boiler room, etc.), floors with embedded or loose heating pipes and on floors over crawl spaces.

The damp proof membrane must consist of long-lasting polythene sheeting (at least 0.2 mm thick), which is laid with an overlap of at least 200 mm. In extreme humidity, we recommend a ventilated damp proof membrane. This can also be combined with mechanical ventilation.

PLANNING INSTALLATION

If the room is fairly square, the length of the boards should run parallel to the incoming light. In long, narrow rooms it is best to install the boards along the length of the room due to the movement of the wood (see below under EXPANSION GAP).

EXPANSION GAP/RESTRICTIONS

Wood is a living material, which means that a floating wood floor will move a little (expand and contract), despite the laminate design, depending on how the indoor climate changes through the year.

Therefore, you must leave a space (called an expansion gap) of at least 1.5 mm per metre wide of floor, minimum 8-10 mm, between floor and wall. This also applies between the floor and thresholds, pipes, steps, fireplaces, stone floors, etc. The expansion gap is hidden using skirting or edging.

"Pure" (rectangular) areas can generally be covered with laminate boards as a single unit up to 250 m² without any problem. However,

the max floor width is 12 m. Larger areas need to be divided by expansion gaps.

Laminate squares should not be installed over a single area larger than 75 m².

However, in more complicated spaces, for example where a corridor is to be floored along with rooms on both sides, the floor may buckle over considerably smaller areas than is stated above. In such cases, we recommend that the floors are laid in several, independent squares/rectangles with expansion gaps between.

Remember that where two wood floors meet, two expansion gaps must also be accommodated.

If all the areas need to be installed as a single floor without any gaps, both laminate boards and squares can be glued to the subfloor (see separate instructions). This method minimises movement in the wood floor and should also be used when installing patterns, with boards laid in different directions, or in other cases which cause irregular movement in the floor.

GLUING

With 14 mm (excluding Ultraloc) and 20 mm boards, run a 10 cm line of adhesive along the groove of the board at half-metre intervals. For larger floors, >7-8 m wide, and/or heavily trafficked floors and in the case of underfloor heating, we recommend 20 cm lines of adhesive spaced 20 cm apart. The short ends should always be glued along their whole length. Use Tarkett Adhesive D3.

DIFFERENT TYPES OF SUBFLOOR

Cellar floor or concrete floor: Fill in any irregularities. Lay out the necessary damp proof membrane (see DAMP PROOF MEMBRANE above). Lay Tarkett Cellfoam 3 mm or cork sheeting over the damp proof membrane and then install the floating wood floor on top of that.

Old wood floor: Check that the subfloor is sound, level, free from rot and squeaks. Fill or sand down major irregularities. Fill minor irregularities with flooring paper. Then lay flooring paper as an underlay. Install the new floor boards at 90° to the old ones.

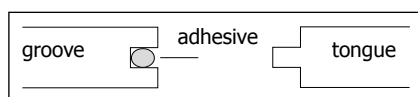
Alternatively, 14 and 20 mm floors can be nailed to the subfloor.

Particle board: Similar to the previous section. However, cannot be nailed. Direction of boards as in PLANNING INSTALLATION.

Hard or soft sheet flooring: Wood floors can be laid directly onto vinyl floors, linoleum floors, needle felt and thin, tight-looped carpet. Check with your installer.

EPS, cellular plastic foam: Tarkett 14, 20 and 22 mm laminate boards can be installed over cellular plastic insulation with a compression strength of minimum 150 kN/m² (thickness tolerance ±0.5 mm). The sheets should be secured and laid at 90° to the length of the floor boards.

If necessary, a damp proof membrane should be laid under the cellular plastic foam. Use flooring paper over the foam as a middle layer. Laminate squares must not be laid directly onto foam.



UNDERFLOOR HEATING

The following applies to underfloor heating under wood floors: the heating system must be designed so that it provides even heat over the whole area of the floor and must never exceed 27°C in any part of the floor. Also applies under carpets, cupboards, etc. This requires a self-limiting electrical or correctly designed water-borne underfloor heating system. (See also under DAMP PROOF MEMBRANE, EXPANSION GAP and GLUING).

When the heat passes through the wood floor, it dries out more than usual, so that small slits may arise during the heating period. In this respect, Beech and Maple move more than other woods, and so are not recommended for use with underfloor heating. Max floor width is 12 m, with no joined floors, i.e. divided at the doorway.

WOOD FLOORS IN PUBLIC ENVIRONMENTS

Wear and loads on floors in public environments place great demands of the surface treatment, care and sometimes even the underlying structure. See separate instructions.

PROTECTIVE COVER

If building work is carried out after installation, the wood floor should be covered for protection. The protective cover must be able to let through moisture and must not discolour the finished surface of the floor.

Masking tape must not be stuck directly to the wood floor.

IMPORTANT INFORMATION FOR THE INSTALLER

All parts of this wood floor have constantly been checked throughout the production process. The surface of the floor has been subjected to special checks and been quality controlled in line with our specifications. If you do discover a board which does not match the other boards, please do not install it. We will only be liable for the cost of the faulty board.

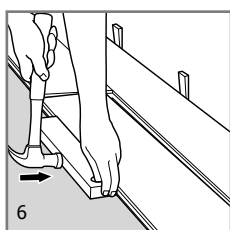
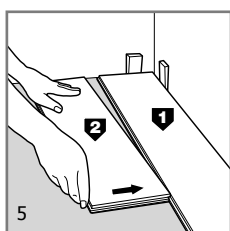
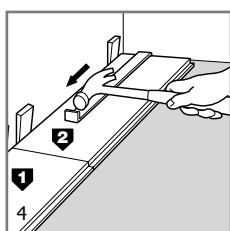
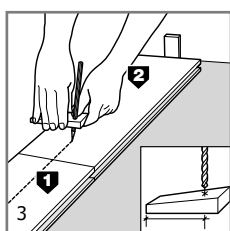
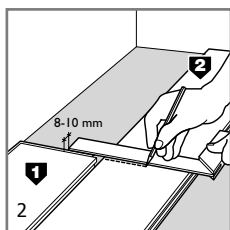
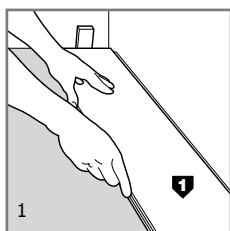
After an inspection, we will replace faulty material. Note that if the faulty board is installed, Tarkett Sommer cannot be held liable for the end result.

MAINTENANCE

Use dry cleaning methods such as vacuuming or dry mopping. If necessary, use a well wrung-out scouring cloth.

Wood floor	Treatment
	Normal wear
Lacquered	Water+Tarkett Bioclean
Oiled	Water+Tarkett Oil Refresher
	Hard wear
Lacquered	Tarkett Refresher
Oiled	Tarkett Maintenance Oil

INSTALLATION LAMINATE BOARDS



1. Lay out the first row of boards (1). Start in a left-hand corner with the groove side against the wall and work towards the right.
2. Turn the last board in the row (2) so that the tongue end is against the wall. Mark where to cut 8-10 mm (the same as the size of the expansion gap) from the short end. Cut the board. Then push it into position and place a spacer between the short end and the wall. If using a handsaw, saw from the top of the board. If using a circular saw or jigsaw, saw from the underside.

3. If the final row will be narrower than 5 cm or if the wall is crooked, the first row should be cut. Measure and mark where to cut as illustrated. Check with a length of line that the row is straight.

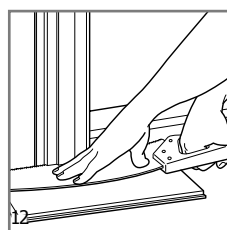
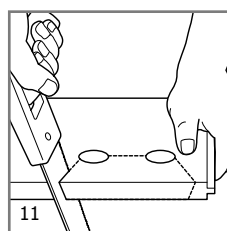
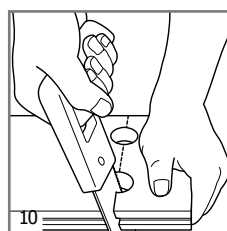
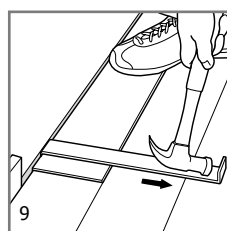
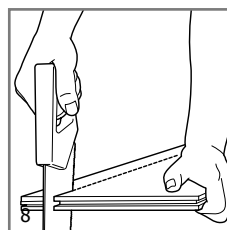
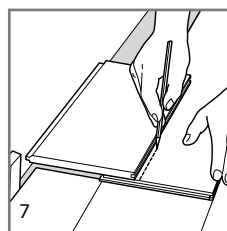
4. Place the boards against the wall. Create a suitable expansion gap by inserting spacers between board and wall. Glue along the short groove of the adjoining board (2). Press the board in against the wall and make sure it is straight. Tap with the Tarktool to create a joint and secure in place with a spacer.

Tip: Where you have long rows of boards, it can be difficult to fit the spacers after the first row. Wait until you've installed 4-5 rows. Using a Tarktool, pull the installed area a small distance away from the wall for easy fitting of the spacers. All the short sides are to be glued all the way along their length, while the long sides should have glue dotted along them. See also the GLUING section.

5. Start the second row with the rest of the cut board (2). Ensure that all the short end joints are staggered at least 50 cm from the short end joints of the other row. With half-lengths (=max 1,250 mm boards) the joints should be staggered at least 30 cm. Be careful matching the pattern if using square boards (less staggering may be necessary). Long strip boards do not require pattern matching.

6. Use Tarkett's tapping block to tap the boards together. Never use an offcut of board as a tapping block. This and/or tapping too hard will cause chipped edges.

7. Saw the final row to a suitable



width. Place the final board (with the tongue facing the wall) on top of the last-but-one board overlapping by about 4 mm towards the wall. Place a spare bit of board on top and measure the gap by running the bit of board along the wall and marking with a pencil where to cut the final board. This will give an expansion gap of approx 10 mm.

If the expansion gap needs to be bigger, move the final boards the necessary few millimetres accordingly (tongue of spare board = 6 mm, 6+4=10 mm).

8. Saw along the mark.

9. Dot adhesive along the groove. Tap in the sawn board using the Tarktool. If the final board has not been cut, the tongue must be sawn off to retain the expansion gap. Insert a spacer at the end of the last row too. Leave the spacers in place for a couple of hours (e.g. overnight) before removing them. Finish with Tarkett's edging strips.

10. If the short side of the board meets a pipe: Drill a hole with a diameter approx. 16 mm greater than the pipe diameter to give an expansion gap around the pipe. Then cut the board straight through the hole.

11. If the long side of the board meets a pipe: Drill a hole as above. Saw off the bit which will fit behind the pipes, closest to the wall. Cut at an angle as shown in the picture.

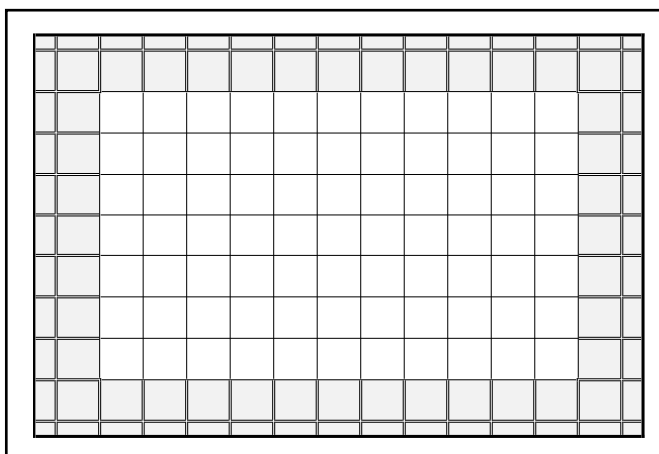
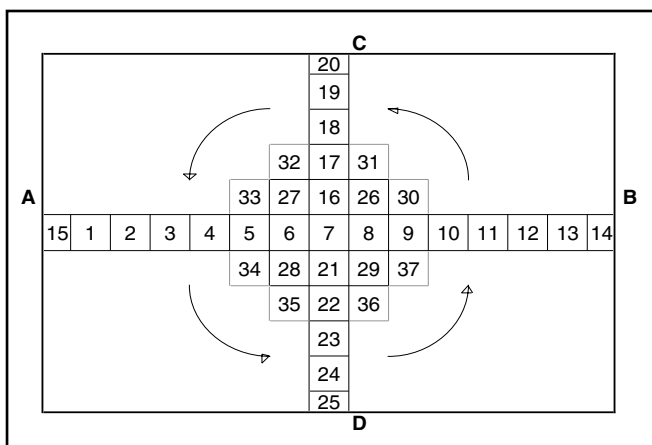
Tap the board in position, glue the loose piece in place, fit a spacer against the wall and cover with pipe collars.

12. Doorframes can be removed and moved up, but it is usually easier to saw them off. Use a loose floorboard as a height template and saw the frame with a fine-toothed saw. Push the floor under the frame. Ensure that the floor is not wedged between the subfloor and the frame.

INSTALLATION PLANK

Plank is made from one large piece of wood. The colour of the boards may vary and even small differences in shade between adjoining boards may be seen as annoying. Therefore, plank floors should be "sorted" when installing. Open several packs and install with gentle colour transitions. This avoids the floor's lightest boards appearing next to the darkest boards.

INSTALLATION LAMINATE SQUARES



1. Lay the squares out in a cross approximately in the middle of the room. Do not glue. Adjust the squares so that line A-B runs parallel to the corresponding wall. Line C-D should be angled at 90° to line A-B.
2. Adjust the cross so that the pieces at each end are the same size. Leave at least an 8-10 mm expansion gap between the floor and each wall as well as any other fixed details (rule of thumb is 1.5 mm per meter of floor).
3. Cut the end pieces to the right size and glue to the next square along the tongue and groove. Fix the cross against all walls with spacers. Note that only the squares at the edge are to be glued.
4. Continue installation (without gluing) circle by circle around the middle block.
5. Using a tapping block, carefully tap together the squares, making sure not to disturb the cross.
6. The squares in the middle of the floor do not require gluing. Only the two outermost circles should be glued to each other to form a frame to hold the floor together.
7. All the squares may be glued if the laminate squares are to be installed in more complicated or larger spaces. Note the maximum areas stated under RESTRICTIONS.

ULTRALOC – THE TONGUE AND GROOVE THAT DOESN'T NEED GLUING

The conditions for using the ULTRALOC PRODUCTS, Viva 8.5, 11.5, 12 and 14 mm Ultraloc, are the same as for products with a traditional tongue and groove design, see page 2, except on a few points due to a different profile and glue-free joining of the boards.

Below, under headings from page 2, are instructions specific to ULTRALOC in each section.

CONDITIONS

See page 2.

TOOLS

See page 2.

A tapping block must be used to protect the tongue and edges of the boards when tapping together.

DAMP PROOF MEMBRANE

See page 2.

However, the following applies for Viva 8.5 and 11.5: When using a ventilated damp proof membrane such as Platon F2, load-distributing board must be installed over it, with flooring paper on top as an intermediate material.

PLANNING INSTALLATION

See page 2.

EXPANSION GAP/RESTRICTIONS

See page 2.

However, the max floor width is 8 m and the max length (along the length of the boards) is 12 m.

Traditional tongue and groove boards are used for creating patterns as new tongues and

grooves are easily cut on site after cutting the board to size. The traditional design is also more suitable for being glued into place.

GLUING

Ultraloc does not require gluing.

DIFFERENT TYPES OF SUBFLOOR

See page 2.

Concrete or Screeded Floors

For Viva 8.5, 11.5 and 12 mm, use Tarkett Tarkofoam 2 mm or cork sheeting.

For 14 mm Ultraloc, use Tarkett Cellfoam 3 mm or cork sheeting.

Old wood floor

The Ultraloc products must not be nailed to the subfloor.

Particle board

Hard or soft sheet flooring

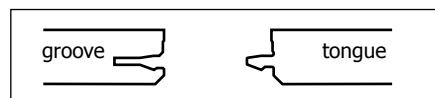
EPS, cellular plastic foam (polystyrene).

However, the following applies for Viva 8.5, 11.5 and 12 mm: On cellular plastic foam, a load-distributing board must first be installed over it, with flooring paper on top as an intermediate material. The damp proof membrane must be laid out before/under the cellular plastic foam (polystyrene). Min density 30 kg/m³

UNDERFLOOR HEATING

See page 2.

Profile of 14 mm Ultraloc



Max floor width 8 m and max length 12 m. Plus division in all doorways, arches, etc. – no joined floors.

PROTECTIVE COVER

See page 2.

IMPORTANT INFORMATION FOR THE INSTALLER

See page 2.

MAINTENANCE

See page 2.

Wood floor	Treatment
Lacquered	Water+Tarkett Bioclean
Oiled	Water+Tarkett Oil Refresher
	Hard wear
Lacquered	Tarkett Refresher
Oiled	Tarkett Maintenance Oil

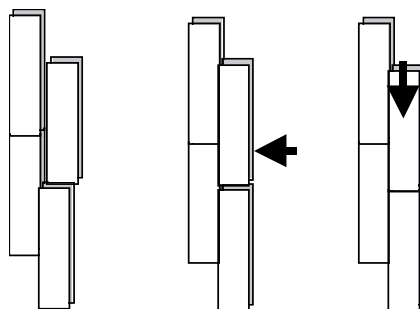
INSTALLATION INSTRUCTIONS LAMINATE BOARDS WITH ULTRALOC, VIVA 8.5, VIVA 11.5 AND 14 MM WITH ULTRALOC

The installation instructions for the ULTRALOC PRODUCTS, Viva 8.5, 11.5, 12 and 14 mm Ultraloc, are the same as for products with a traditional tongue and groove design, see page 3. However, ignore the instructions regarding gluing along the board joins.

When tapping the boards together, it is important to use the Tarkett tapping block to avoid damaging the tongue. Hit the tapping block with a hammer, preferably a heavy hammer as it is better to have one hard tap than many small ones. See the illustrations below describing the principle for installation.

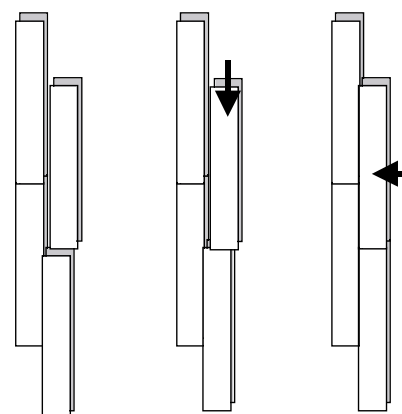
Ultraloc with HDF middle layer – Viva!

The principle for the simplest installation of floors with an HDF middle layer is to tap together the long side first and then the short end, see below:



Ultraloc with ribbed middle layer

The simplest way of installing all Ultraloc products with a middle layer of ribs is to tap together the short end first and then the long side, see below:





Tarkett Résidentiel, Baisieux, France, Tel: +33-320 64 46 46, Fax: +33-320 64 46 58 • Tarkett Sommer Ltd, Worcester, Great Britain, Tel: +44-1 905 342 700, Fax: +44-1905 342 777 Tarkett Sommer B.V., Breda, The Netherlands, Tel: +76-5780757, Fax: +76-5780785 • Tarkett Sommer, Brussels, Belgium, Tel: 02-520 04 67, Fax: 02-520 05 88 • Tarkett Sommer Försäljnings AB, Sollentuna, Sweden, Tel:+46-8-625 19 00, Fax:+46-8-96 62 83 • Tarkett Sommer A/S, Greve, Denmark, Tel:+45-43 90 60 11, Fax:+45-43 90 37 00 • Tarkett Sommer AS, Drammen, Norway, Tel:+47-32209200, Fax:+47-32209201 • Tarkett Sommer Oy, Helsinki, Finland, Tel:+358-9 682 31 20, Fax :+358-9 692 73 87 • Tarkett Sommer Vertriebs GmbH & Co. KG, Frankenthal, Germany, Tel:+49-623 3810, Fax:+49-6233-81 16 18 • Tarkett Sommer GmbH, Vienna, Austria, Tel:+43-1 478 80 62, Fax:+43-1 478 80 61 • Tarkett Sommer GmbH, Oberentfelden, Switzerland, Tel:+41-62 737 90 50, Fax:+41-62 737 90 55 • Tarkett Sommer Polska SP.Z.O.O., Warzaw, Poland, Tel:+48-22 639 30 25, Fax:+48-22 639 30 28 • Tarkett Sommer S.A., Madrid, Spain, Tel:+34-91 358 00 35, Fax:+34-91 358 06 19 Tarkett Sommer - Produtos Internacionais, SA, Lisbon, Portugal, Tel: +351 21 756 75 40, Fax: +351 21 756 75 41 • Tarkett Sommer Spa, Milan, Italy, Tel:+39-02 319 211, Fax:+39- 02 349 01 89 • Tarkett Sommer Australia Pty Ltd, Castle Hill, N.S.W., Australia, Tel:+61-2 98 99 32 55, Fax:+61-2 96 34 10 29 • Tarkett Far East, Singapore, Singapore, Tel:+65 743 53 84, Fax:+65 747 43 59 • Harris-Tarkett Inc, Johnson City, TN, USA, Tel:+1- 423 928 31 22, Fax:+ 1-423 928 94 45 • Tarkett Sommer Asia Pacific Ltd., Wanchai, Hong Kong, Tel: +852 2511 8716, Fax: +852 2507 5517 • Tarkett Sommer International GmbH, Frankenthal, Germany, Tel:+49-6233 810, Fax:+49-6233 81 16 18 • Tarkett Sommer AB, Hanaskog, Sweden, Tel:+ 46-8 44-26 80 00, Fax:+46-8 44-638 90.

www.tarkett-floors.com